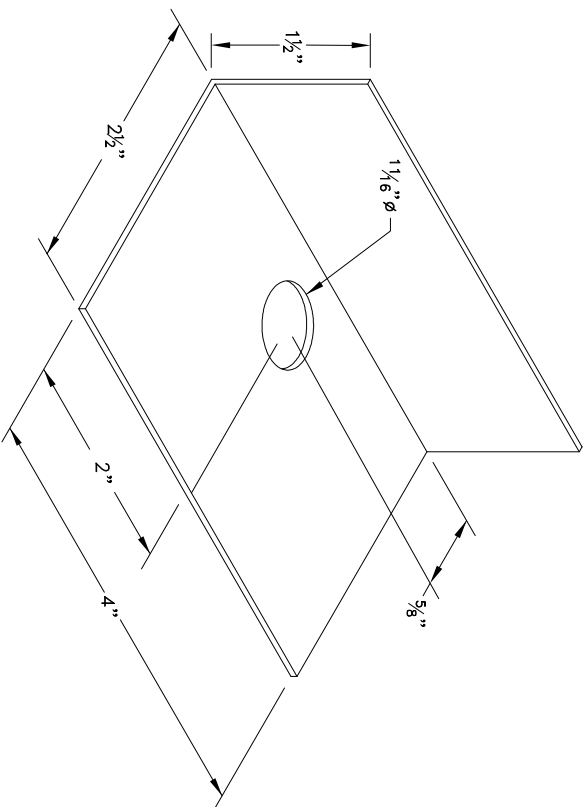


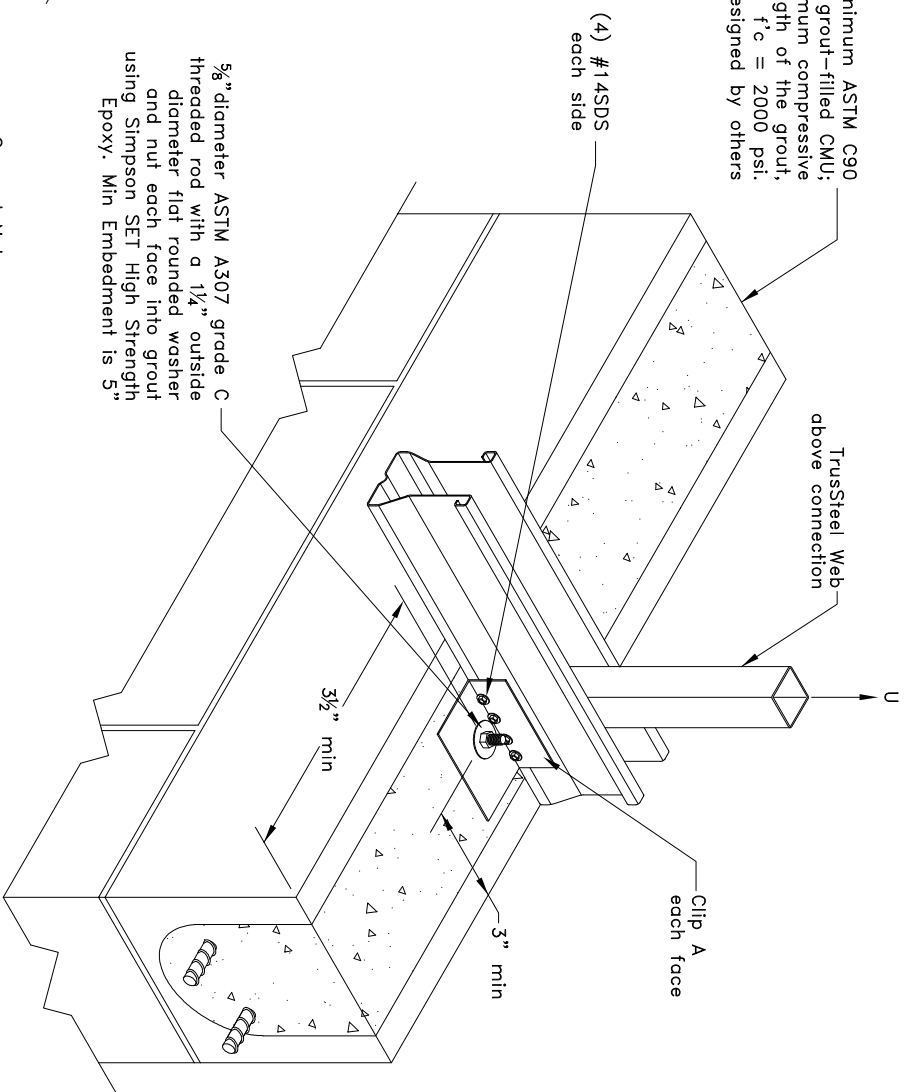
Maximum Uplift Capacity lbs (kN)
for one clip on each face
 $U = 1510 \text{ (6.72)}$



Clip A

16 ga ASTM A653 SS Grade 33 G60
Bare metal thickness, $t = 0.0538"$

8" Minimum ASTM C90
grout-filled CMU;
minimum compressive
strength of the grout,
 $f'_c = 2000 \text{ psi}$.
Designed by others



5/8" diameter ASTM A307 grade C
threaded rod with a 1/4" outside
diameter flat rounded washer
and nut each face into grout
using Simpson SET High Strength
Epoxy. Min Embedment is 5"

General Notes:

1. SDS= Self Drilling Taping Screw
2. #14 SDS screw spacing, end distance and edge distance is 3/4" minimum.
3. Refer to ICC-ESR 1772 for proper installation of anchor and CMU requirements
4. Anchor is not to be installed until the grout has reached the specified design strength. refer to manufacturer's code approval regarding proper installation of anchor.
5. Threaded rod to have sufficient length to accommodate a minimum of (3) exposed threads above the nut and 5" minimum embedment length.
6. Minimum distance between each truss to bearing connection is 20".
7. Attachment of second clip on opposite face is identical to what is shown.
8. Grout shall have a minimum compressive strength $f'_c = 2000 \text{ psi}$
9. It is the responsibility of the building designer to verify that the structural support members are designed for all applicable loads including (but not limited to) the loads given on this detail.
10. Cold Formed Steel Calculations are per the 2004 Addendum to the "AISI 2001 North American Specification for the Design of Cold Formed Steel Structural Members."

TrusSteel
An ITW Company

www.TrusSteel.com

Florida: 1950 Marley Drive / Haines City, FL 33844 / (800) 755-6001
Missouri: 13389 Lakefront Drive / Earth City, MO 63045 / (800) 326-4102
California: 8351 Rovana Circle / Sacramento, CA 95828 / (800) 877-3678

Uplift Attachment to Top of CMU Wall

ITW Building Components Group, Inc. shall not be responsible for any performance failure in a connection due to a deviation from this detail. Any variation from this detail shall be approved in advance by ITW Building Components Group, Inc.

Custom Detail:

TS-CD-TB-C4-003

Date:

10/13/09

TrusSteel Detail Category:

Truss-To-Bearing: Concrete